

AASHTOWare BrD/BrR 6.8

Report Tutorial

RPT3 – Report Tool Using Crystal Reports


RPT3 - Report Tool Using Crystal Reports

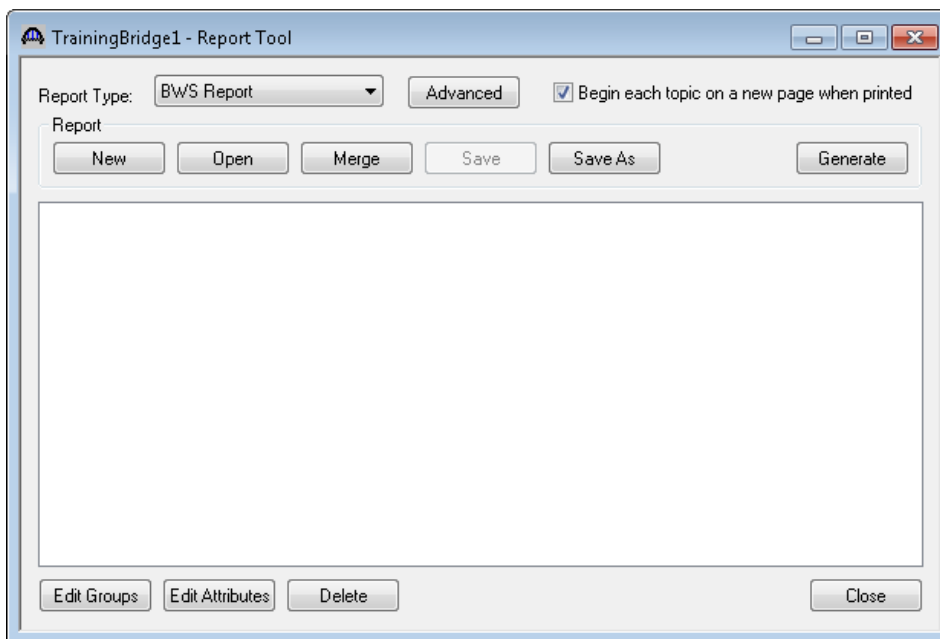
This example describes how to generate report with Report Tool using user defined Crystal Reports RPT file. This example assumes you have access to TrainingBridge1 (BID1) in the teaching database from the installation.

Topics Covered

- How to use Crystal Report help
- How to generate Crystal Report with Report Tool using user defined XSL/RPT file

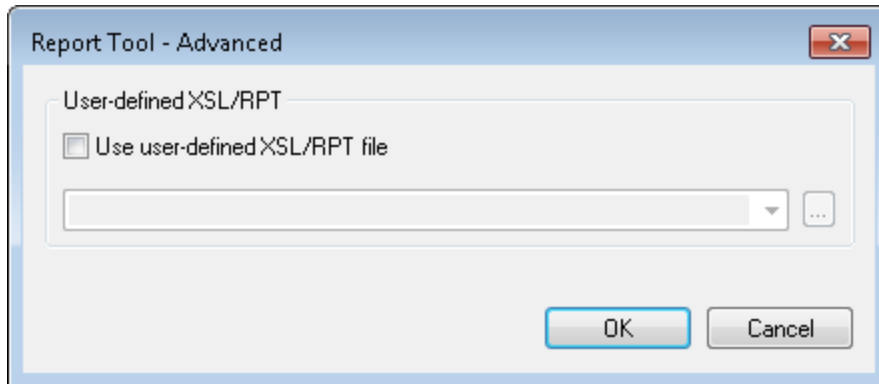
How to use Crystal Report help

Open TrainingBridge1, click Report Tool button  on the tool bar. Report Tool window will open as shown below.



Click Advance button, Report Tool –Advanced dialog will open as shown below.

RPT3 - Report Tool Using Crystal Reports



Click F1 to view Crystal Report help.

Report Tool - Advanced

This window allows you to select advanced options for the generation and display of reports.

User-defined XSL

Select the checkbox to enable selection of a user-defined XSL stylesheet, or Crystal Reports RPT file, with which to display the generated report.

[BrDR - Crystal Report Tutorial](#)

OK button

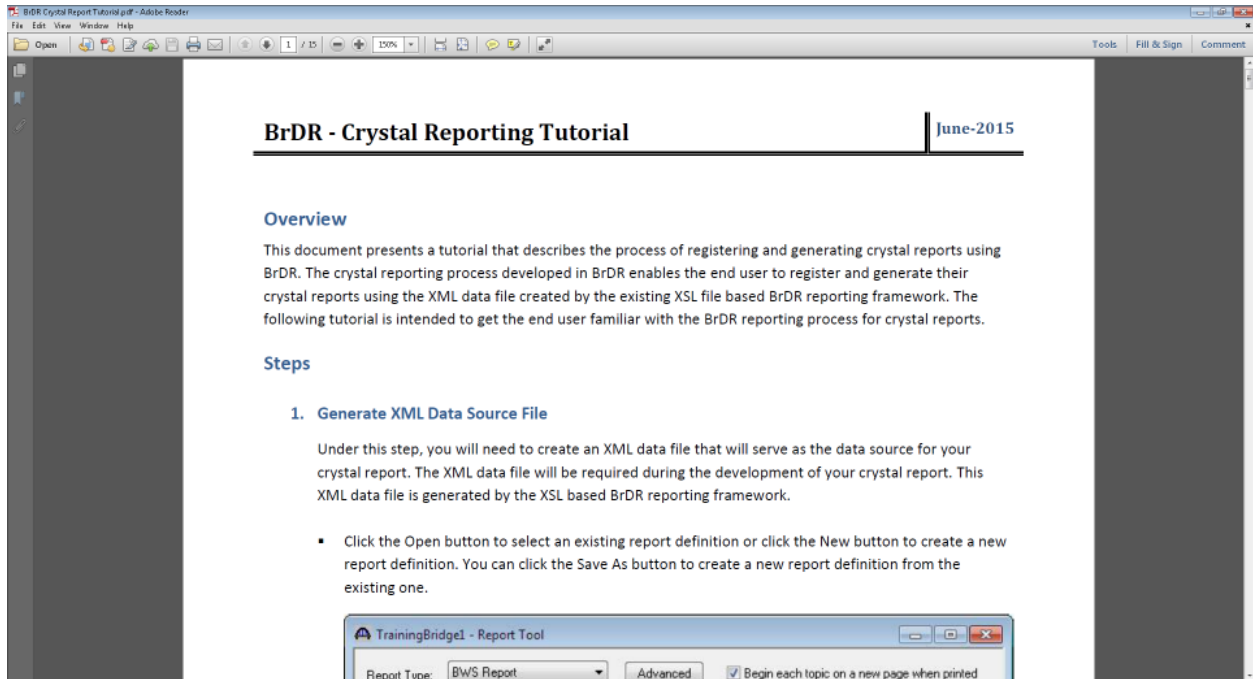
Saves the advanced options for the report definition and closes the window.

Cancel button

Closes the window without saving the advanced options for the report definition.

Click Crystal Report Tutorial button in help window to view tutorial.

RPT3 - Report Tool Using Crystal Reports




The tutorial will guide user through step by step on how to generate XML data source, Crystal Report and how to explore Crystal Report.

Generate Crystal Report with report tool using user defined XSL/RPT file

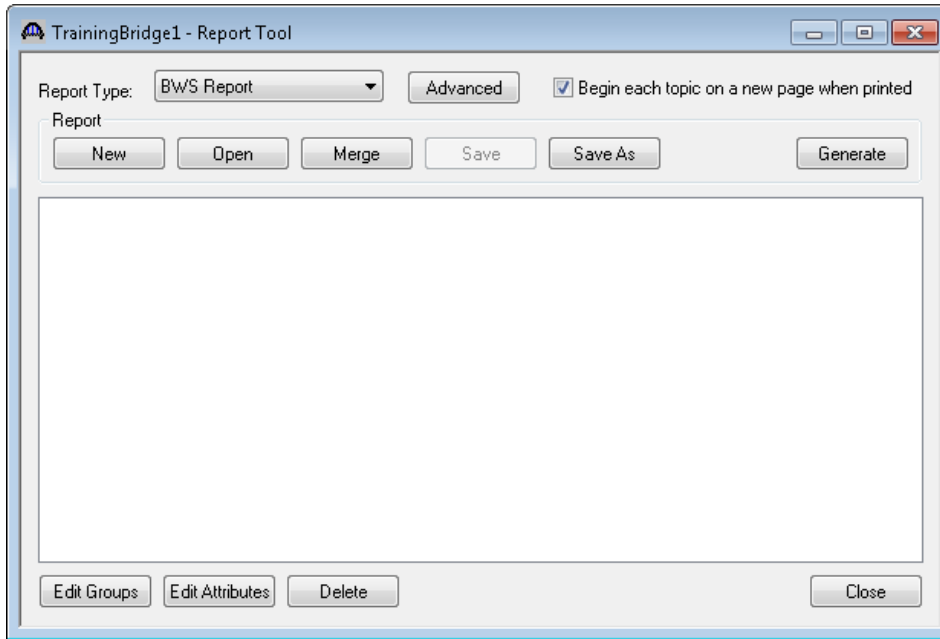
In this example we will use the sample abr and RPT files came from installation to generate Crystal Report. These reports are delivered with BrR/BrD 6.8 release and can also be found under

%InstallDir%\AASHTOWare\BrDR68\Help\CrystalReportHelp folder.

Copy the sample Crystal Report abr and XML files to AASHTOWare\BrDR68\Reports folder under your My Documents folder on your local drive. Copy the sample Crystal Report RPT file to a location of your choice.

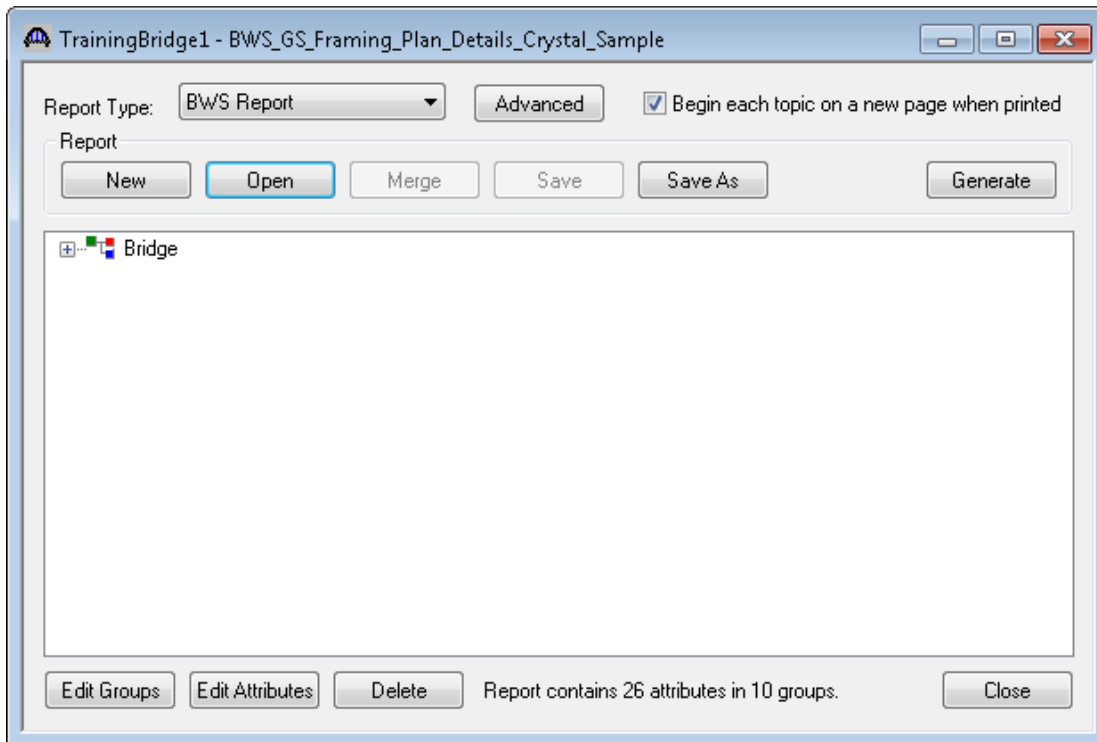
Open TrainingBridge1, click Report Tool button  on the tool bar. Report Tool window will open as shown below.

RPT3 - Report Tool Using Crystal Reports



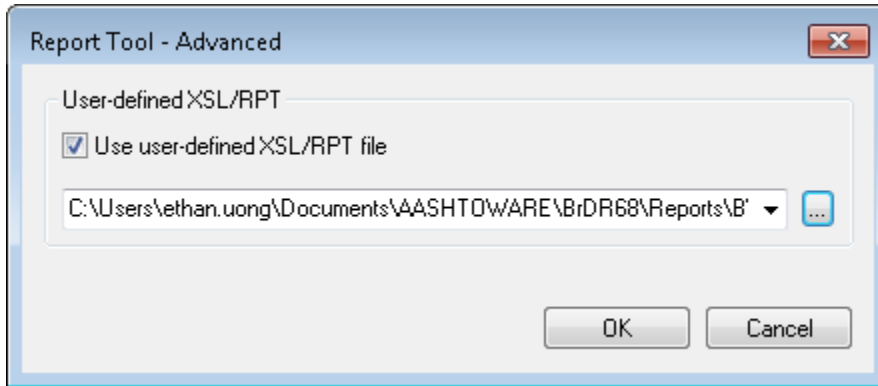
Click Open button and locate your sample abr file (BWS_GS_Framing_Plan_Details_Crystal_Sample.abr).

After abr file is loaded Report Tool window will look like the following.



RPT3 - Report Tool Using Crystal Reports

Click Advance button, Report Tool –Advanced dialog will open as shown below, browse to RPT file (BWS_GS_Framing_Plan_Details_Crystal_Sample.rpt) , click Ok button to link abr file with sample RPT file at the location you selected before.



Click Generate button to generate Crystal Report.

The screenshot shows the "BrDR Crystal Report Viewer" window. The report title is "Bridge Girder System Framing Plan Details". It features two logos: "BrD Bridge Design" and "BrR Bridge Rating", both with "AASHTOWare" and "AASHTO" branding. The report content includes:

- Bridge:**
 - Bridge Id: TrainingBridge1
 - Name: Training Bridge 1(LRFD)
 - NBI Structure ID: TrainingBridge1
 - Year Built: 1999
- Girder System Structure Definition :**
 - Number of Girders : 4
 - Number of Spans : 1
- Structure Framing Plan Details:** [Click To View Girder Spacing Details](#)
- Diaphragm Locations:**

Bay Number: 1

Left Member Distance	Number of Spaces	Right Member Distance	Spacings	Weight
0.00 (ft)	1	0.00 (ft)	0.00 (ft)	
27.31 (ft)	1	18.21 (ft)	0.00 (ft)	
27.31 (ft)	4	18.21 (ft)	26.83 (ft)	
161.00(ft)	1	161.00(ft)	0.00 (ft)	

Bay Number: 2

Left Member Distance	Number of Spaces	Right Member Distance	Spacings	Weight

At the bottom of the viewer, it shows "Current Page No.: 1", "Total Page No.: 2", and "Zoom Factor: 100%".