

AASHTOWare BrD/BrR 7.0.0

Feature Tutorial

HLP1– Help Features

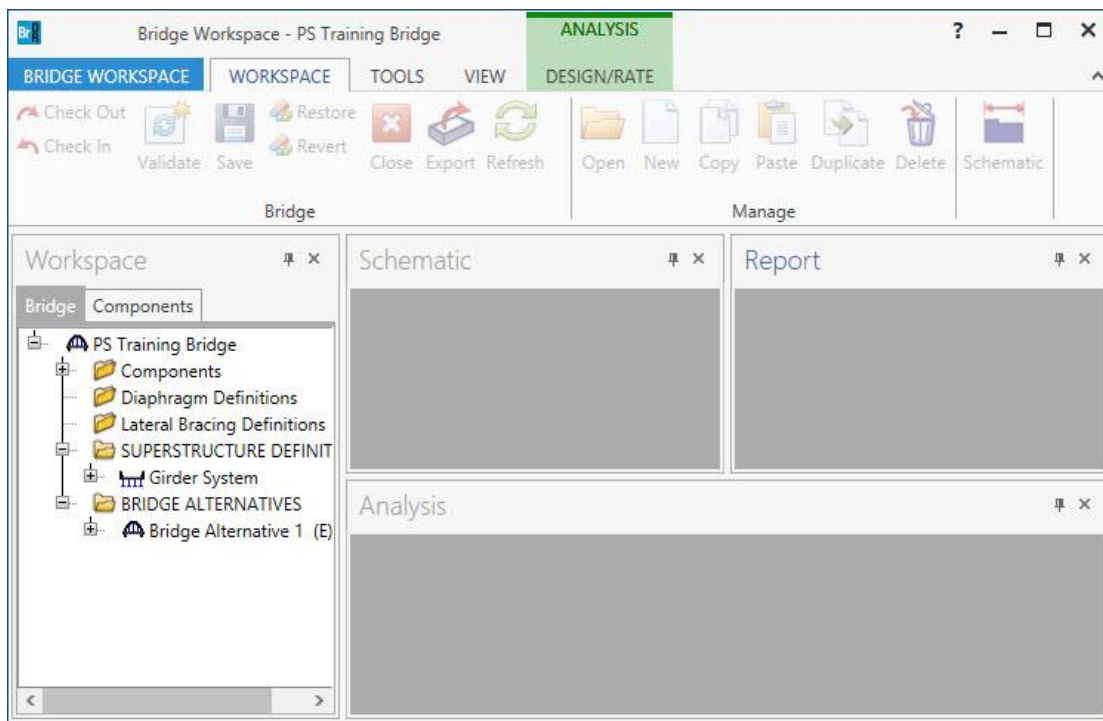
HLP1 - Help Features

This topic describes the various help features and training available in BrD/BrR.

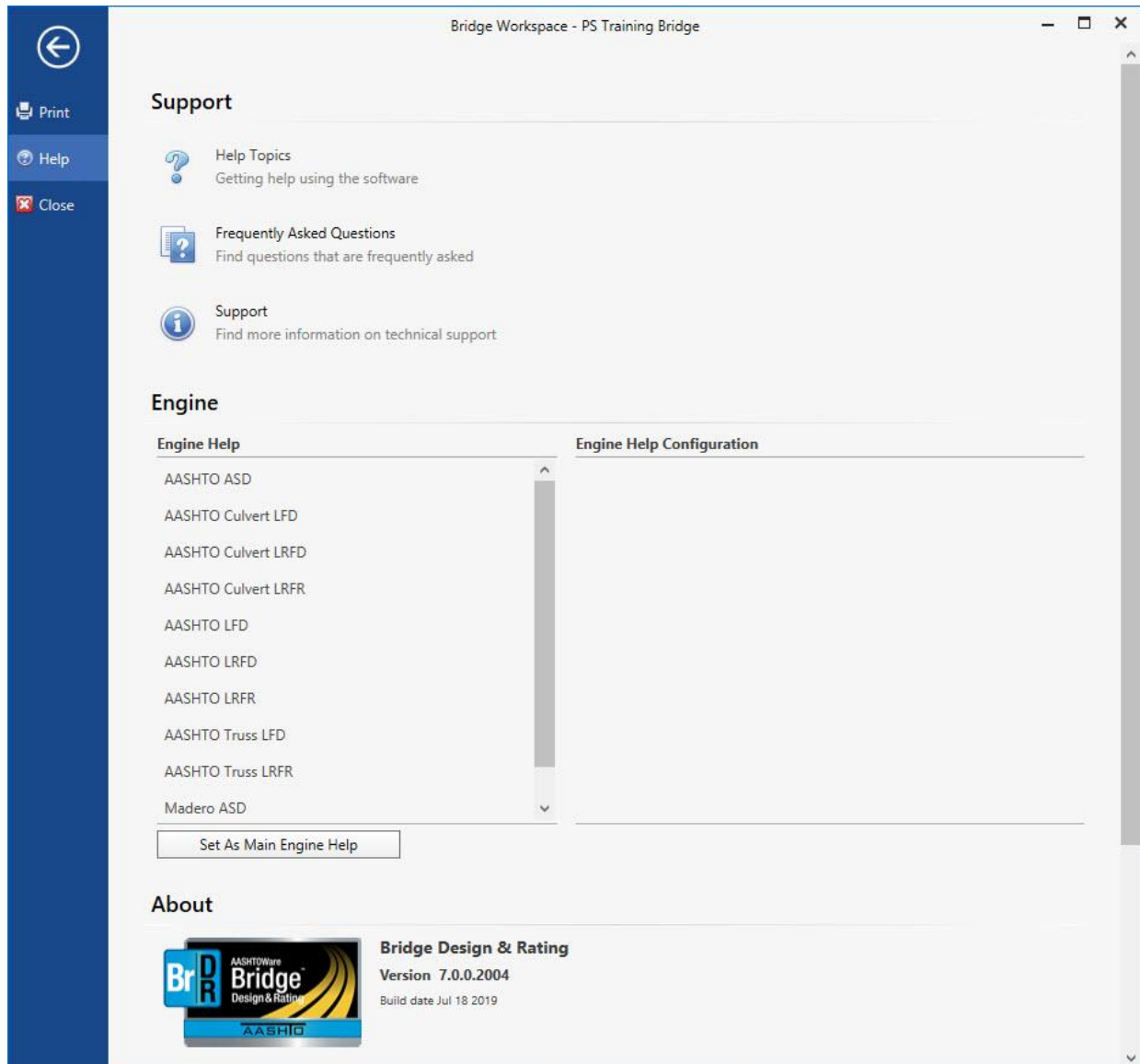
- Online Help
- Engine Related Help
- Limitations Help Topic
- Training Aids

Online Help (BrD/BrR 7.0.0)

There are many different online help files available in BrD/BrR. The following shows the help menu available when a Bridge Workspace is open. Select the “Bridge Workspace” tab.



HLP1 - Help Features



- Selecting “Help Topics” from the menu opens the BrD/BrR help file where you can view the table of contents, the index and search for specific words.
- Selecting “Frequently Ask Questions” from the menu opens a BrD/BrR help file containing frequently asked questions about BrD and BrR.
- Selecting “Engine Help Configuration” configures the engine related help for a particular engine. This is described in more detail in the following section.
- Selecting the “AASHTO...”, “Madero...” selections lets you open help files provided by that particular analysis engine.

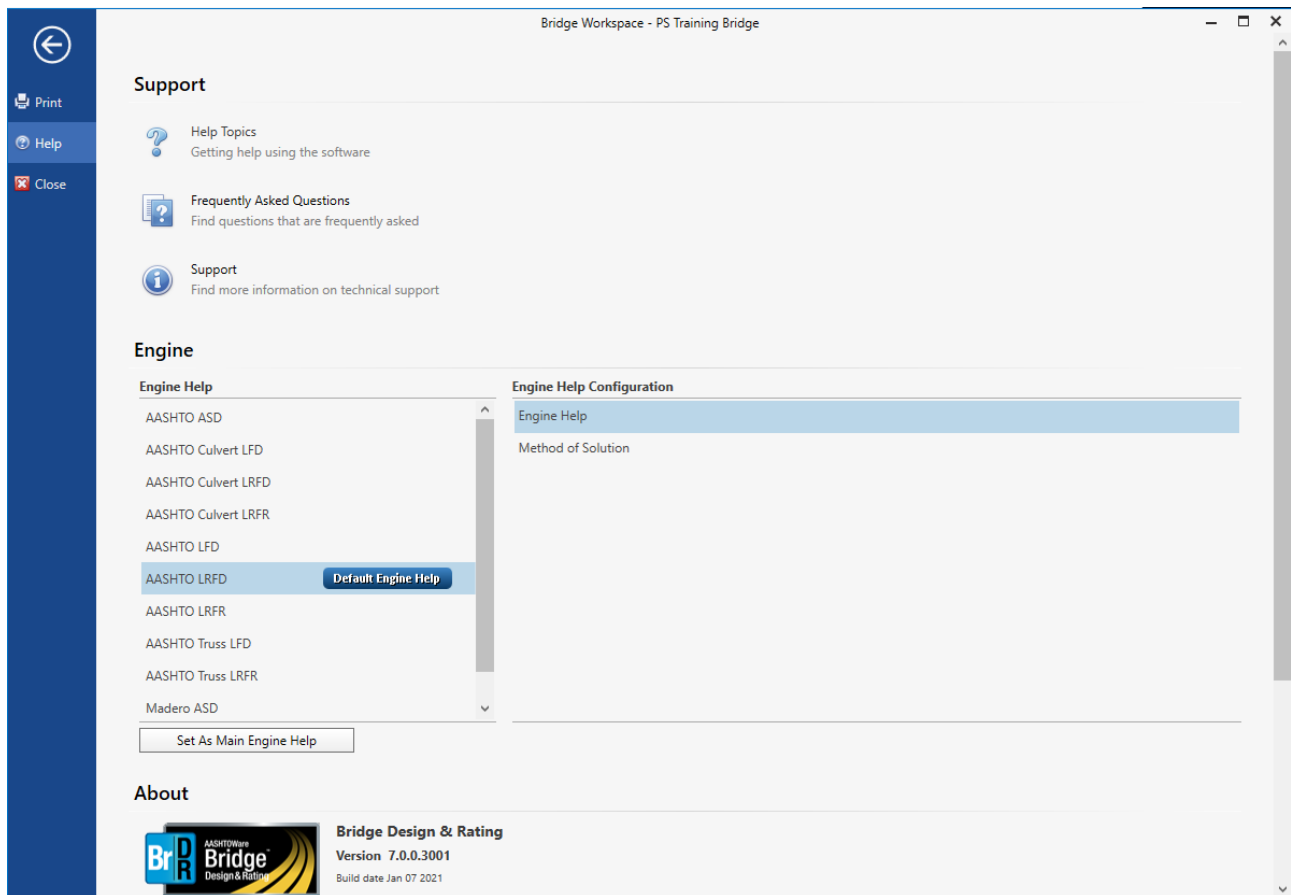
HLP1 - Help Features

Online help is available in each window of BrD and BrR by selecting the F1 button while a window is open. This will open the BrD/BrR help topic for that particular window.

Engine-Related Help

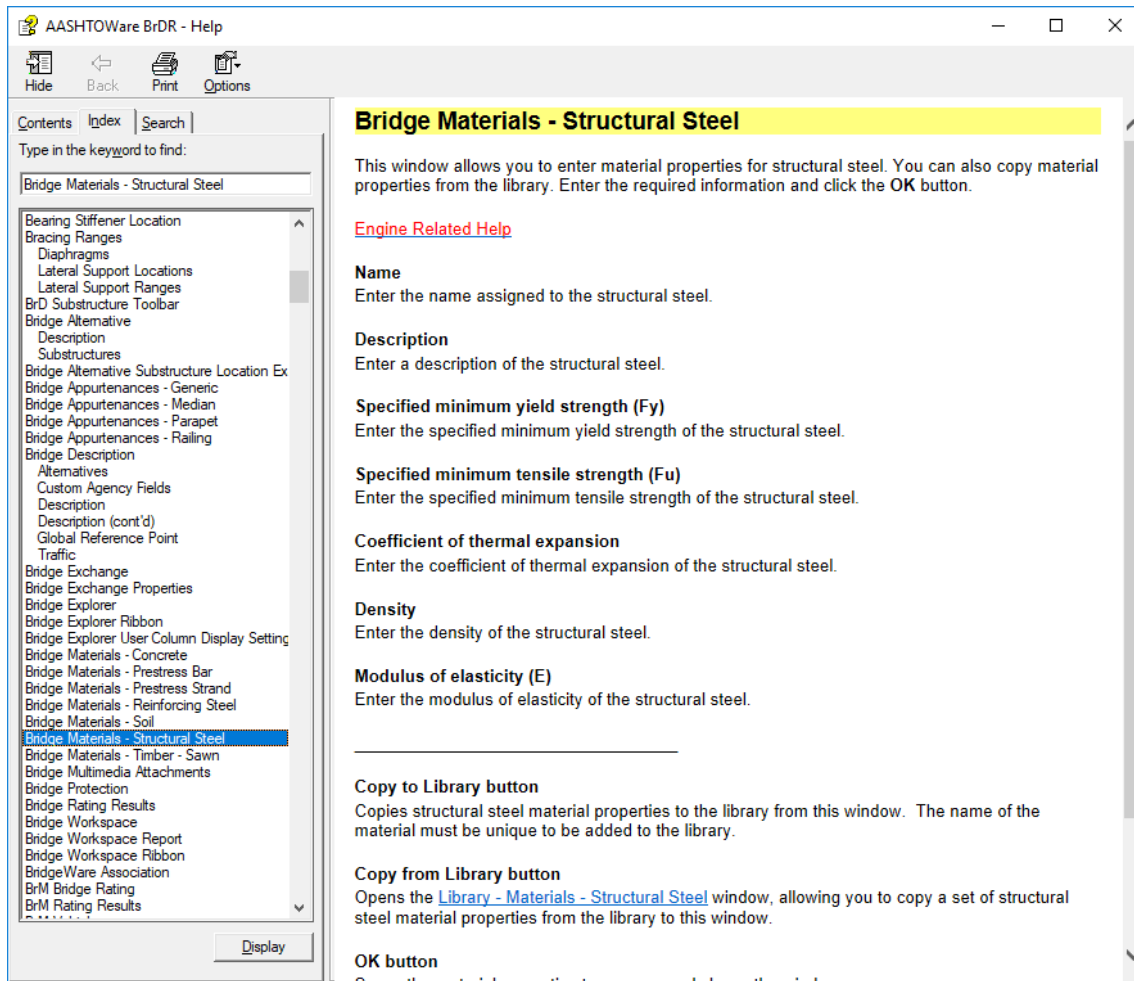
BrD/BrR permits entry of all data describing the physical characteristics of a bridge. A selected analysis engine may not utilize all the physical information stored for a bridge. Therefore, there may be some data in BrD/BrR that may not be used by an analysis engine. Each BrD/BrR help topic contains a link to “Engine Related Help” to help you determine which data is not used by your engine.

You can configure the system to display the engine related help for the analysis engine in which you are interested as shown below. By selecting ‘Set As Main Engine Help,’ the User is able to direct the ‘Engine Related Help’ links within the help menus to the desired analysis engine.

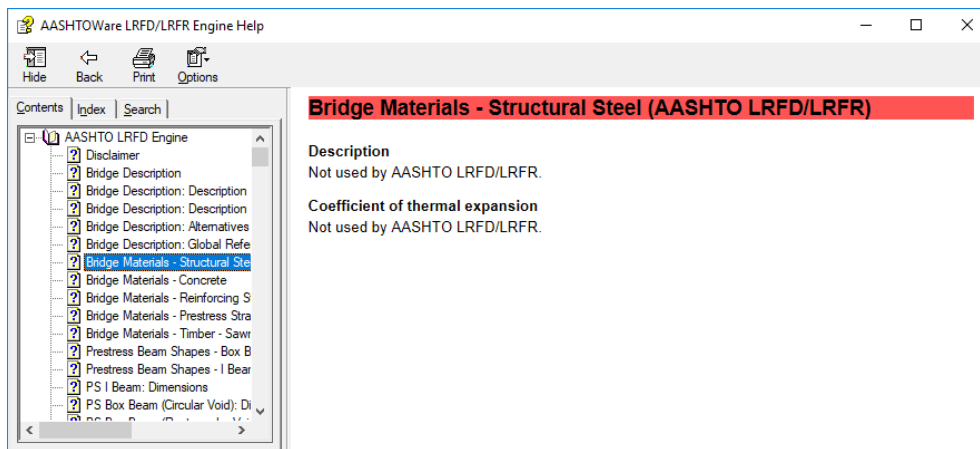


HLP1 - Help Features

The BrD/BrR help topic for the Bridge Structural Steel Material is shown below.



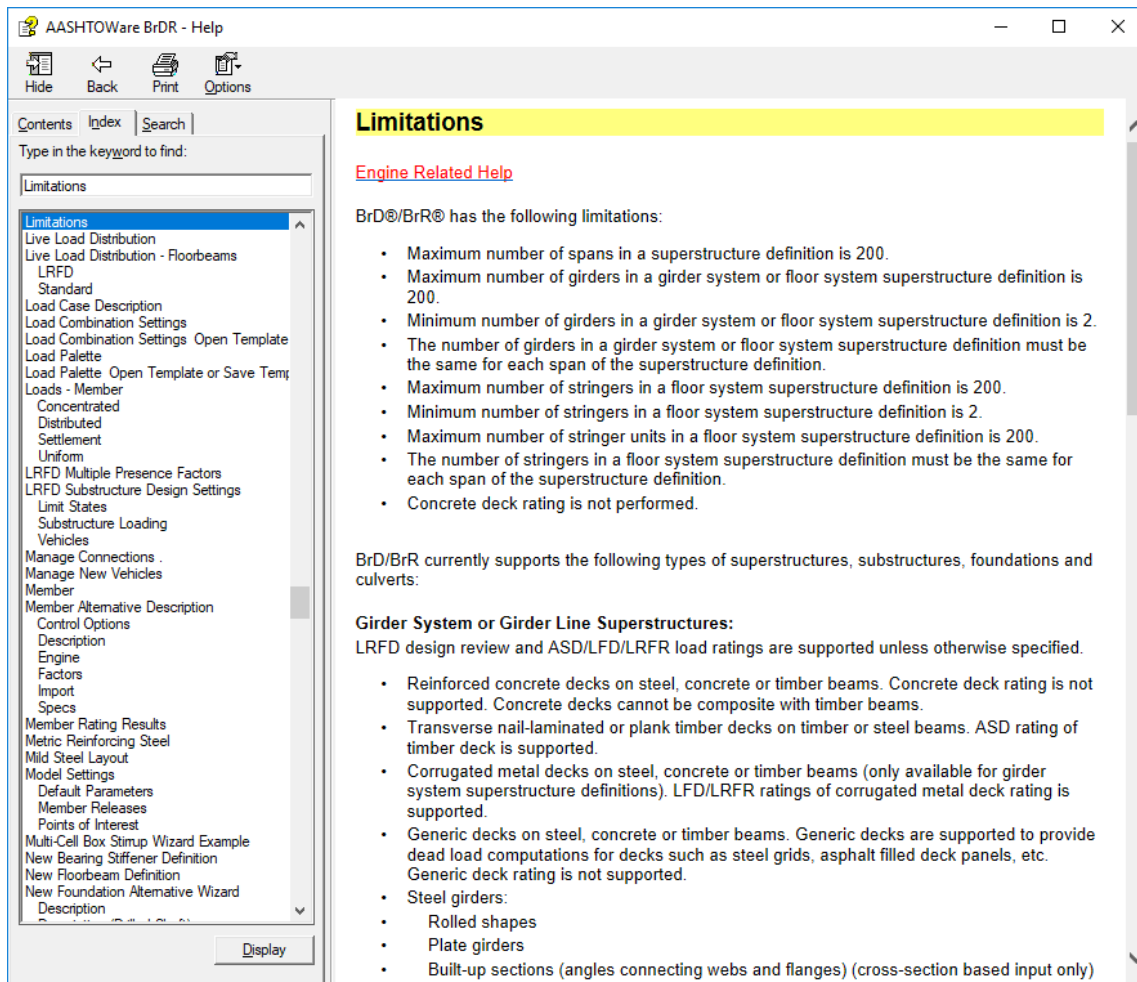
Selecting the Engine Related Help link opens the following window:



Limitations Help Topic

One help topic that merits special attention is the “Limitations” help topic. This topic should be reviewed by users to determine if BrD/BrR supports the type of bridge that they wish to enter. An “Engine Related Help” link is also available to describe any limitations the analysis engine may have.

A portion of the BrD/BrR “Limitations” help topic is shown below.



Training Aids

The BrD/BrR Technical Support website contains example problems that can be used as self-study guides for new users. The BrD/BrR Technical Support website address <https://aashtowarebridge.com>. The “Training” section of this website contains approximately 150 example problems for various activities such as entering different bridge and girder types, importing/exporting, rating, etc.