



Illinois Department of Transportation



# Illinois Automated Permits & AASHTOWare Rating Tool

Phillip Litchfield, PE



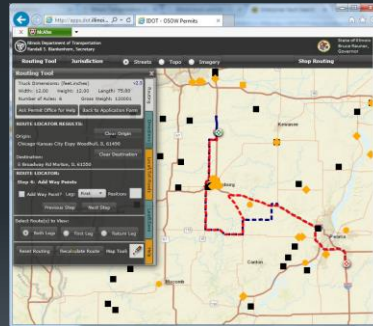
## Illinois Inventory

- 26,770 Structures Greater than 20ft
  - 8,044 State maintained
  - 18,726 Local maintained
  
- 6,954 Small Bridge Program ( $\geq 6\text{ft}$  and  $\leq 20\text{ft}$ )

Many local agency less than 20' not inventoried.

## Overview of Current Permit System (ITAP)

- In-house developed administration and routing components.
- Bentley Superload bridge analysis engine
- AASHTOWare Bridge Database
  - 7203 AASHTOWare Models (State Maintained)



ITAP – Illinois Transportation Automated Permits

All local agency structures posted structures  
Height and width are input.  
1,700 local agencies structures modeled



## Overview of Current Permit System (ITAP)

- Automated up to 250,000lbs
- Engineer review over 250,000lbs or Nonstandard gage
- 234,000 permits issued in 2016
- 2,662 analysis request in 2016

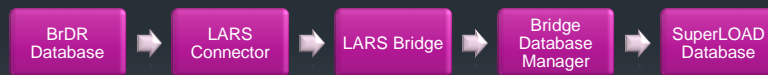


ITAP – Illinois Transportation Automated Permits

1,700 local agencies structures modeled



## Bridge Model Update Process



Lag time for 3<sup>rd</sup> party software update.  
Reconciled differences between software analysis



## Bridge Analysis Data

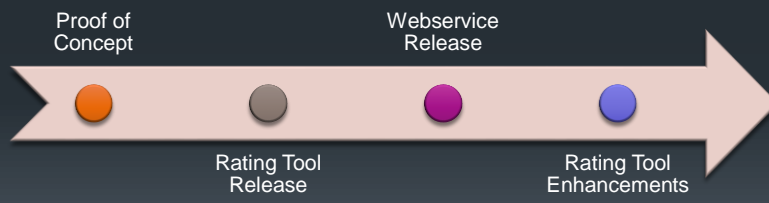
- 6600 AASHTOWare BrR Models
- 1063 BARS Models
- 14 BridgeModeler
- 2 LARS



7203 total BrR models



## Overview of BrR Rating Tool



Proof of Concept -

Rating tool release - 2016

Webservice release - Early 2017



## BrR Rating Tool & ITAP

- ITAP running in test environment using BrR Rating Tool
- BrR Rating Tool connects to ITAP using webservice
- Limited structure types





## Rating Tool - Bridge Model Update Process



Slow response when loading rating tool with large inventory.



## Rating Tool Enhancements

### Major

- Add floor system type structures
- Add culverts
- Add Slab Systems

### Minor

- BRDRSUP-1188 Rating Tool – Stop on First Error
- BRDRSUP-1200 Rating Tool – Checkout Required

IL has verbally agreed to fund floorsystems



Illinois Department of Transportation



# Questions.



[Phillip.Litchfield@Illinois.gov](mailto:Phillip.Litchfield@Illinois.gov)