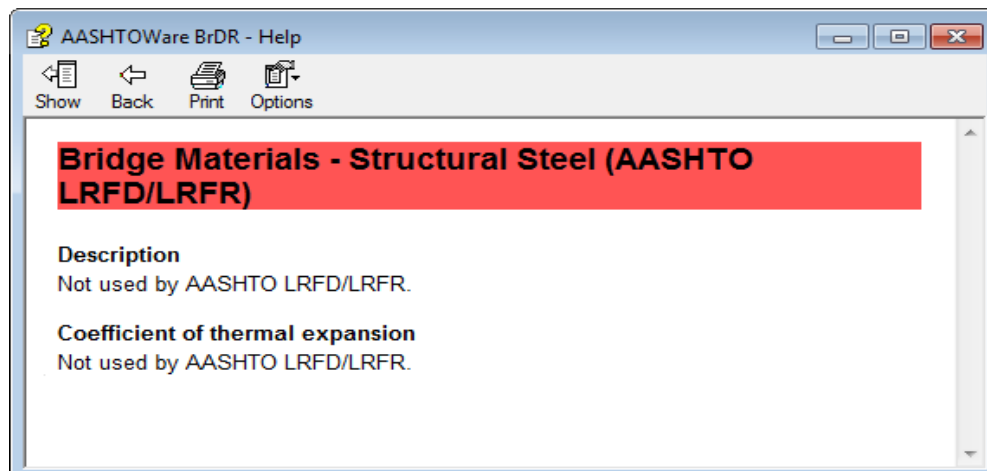


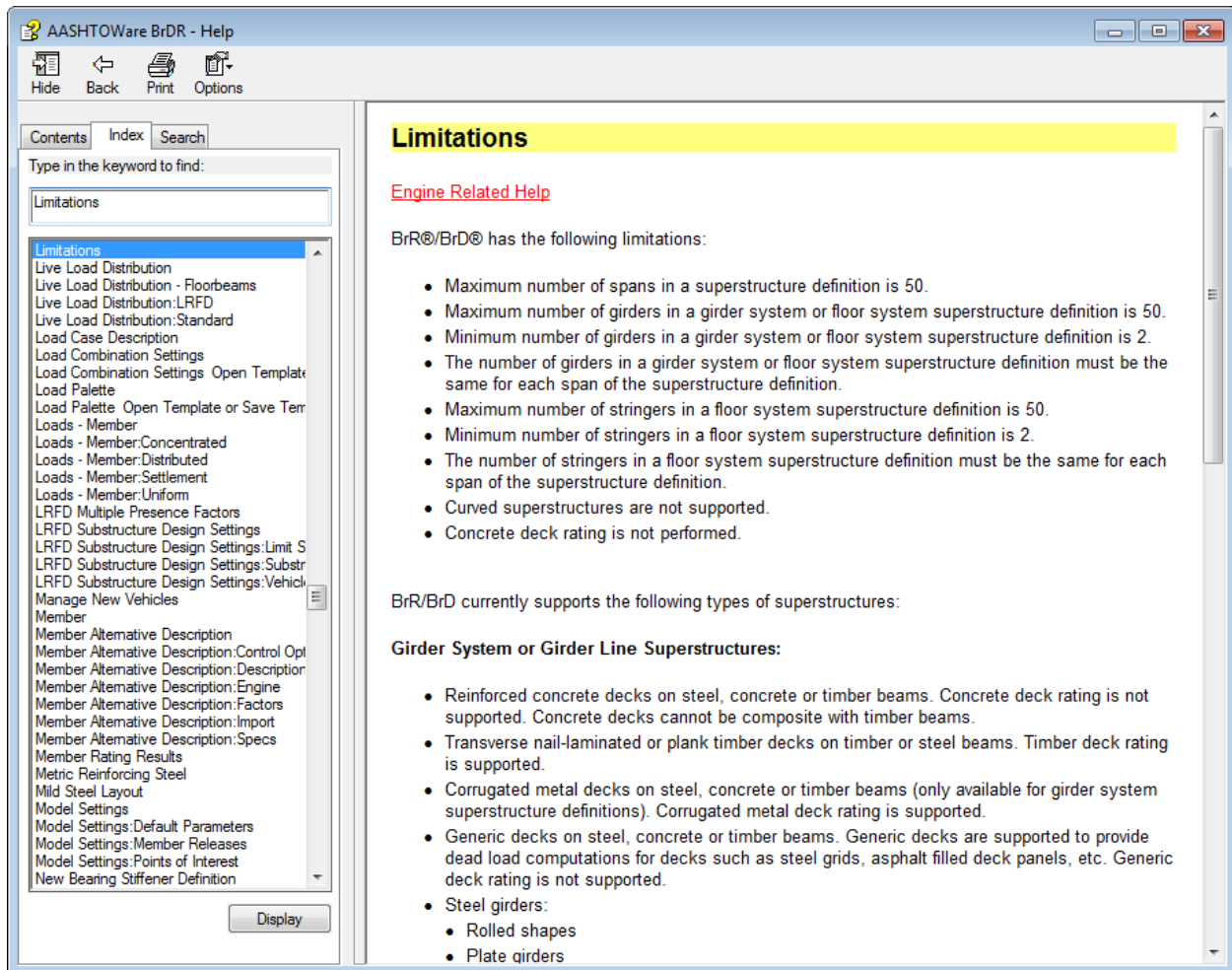
Selecting the Engine Related Help link opens the following window:



Limitations Help Topic

One help topic that merits special attention is the “Limitations” help topic. This topic should be reviewed by users to determine if BrD/BrR supports the type of bridge that they wish to enter. An “Engine Related Help” link is also available to describe any limitations the analysis engine may have.

A portion of the BrD/BrR “Limitations” help topic is shown below.



Training Aids

The BrD/BrR Technical Support website contains example problems that can be used as self-study guides for new users.

The BrD/BrR Technical Support website address is <http://aashto.engrprograms.com/virtis>. A registration form to register for this site is included with the CD for BrD/BrR. You should fill out this form and return it as instructed so you can access this website.

The “Tutorials” section of this website contains approximately 35 example problems for various activities such as entering different bridge and girder types, importing/exporting, rating, etc.