

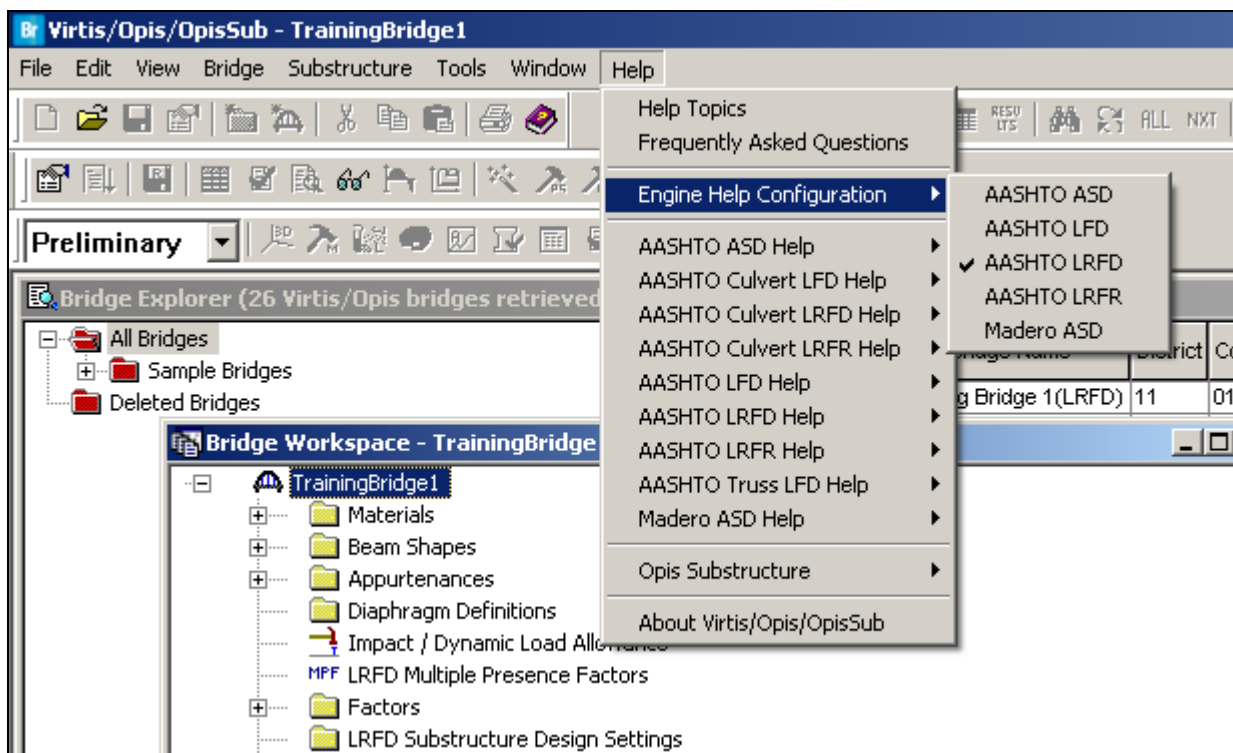
- Selecting “Help Topics” from the menu opens the BrR/BrD help file where you can view the table of contents, the index and search for specific words.
- Selecting “Frequently Ask Questions” from the menu opens a BrR/BrD help file containing frequently asked questions about BrR and BrD.
- Selecting “Engine Help Configuration” configures the engine related help for a particular engine. This is described in more detail in the following section.
- Selecting the “AASHTO...”, “Madero...” selections lets you open help files provided by that particular analysis engine.

Online help is available in each window of BrR and BrD by selecting the F1 button while a window is open. This will open the BrR/BrD help topic for that particular window.

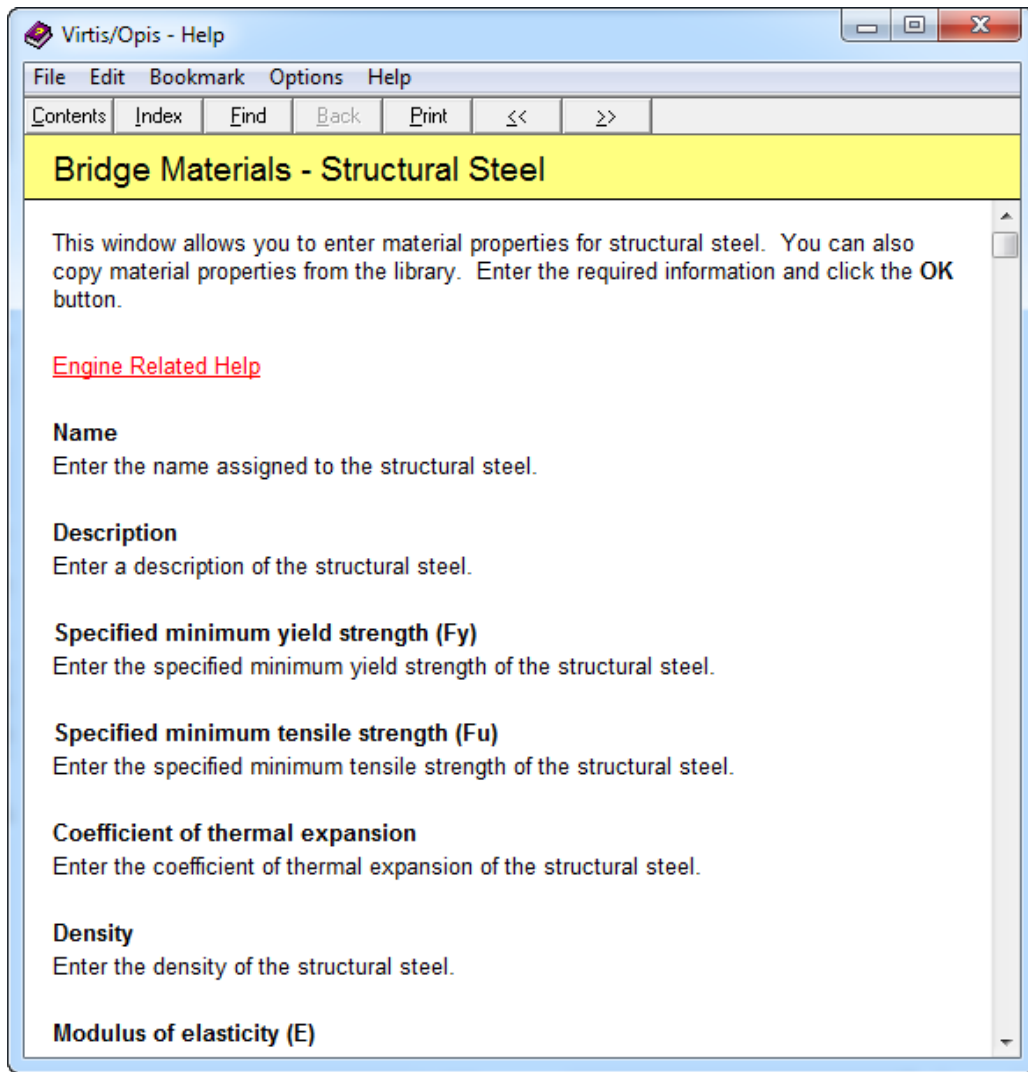
Engine-Related Help

BrR/BrD has been designed to enter data describing the physical characteristics of a bridge without regards to the analysis engine that will be used to analyze the bridge. Therefore, there may be some data in BrR/BrD that may not be used by a particular analysis engine. Each BrR/BrD help topic contains a link to “Engine Related Help” to help you determine which data is not used by your engine.

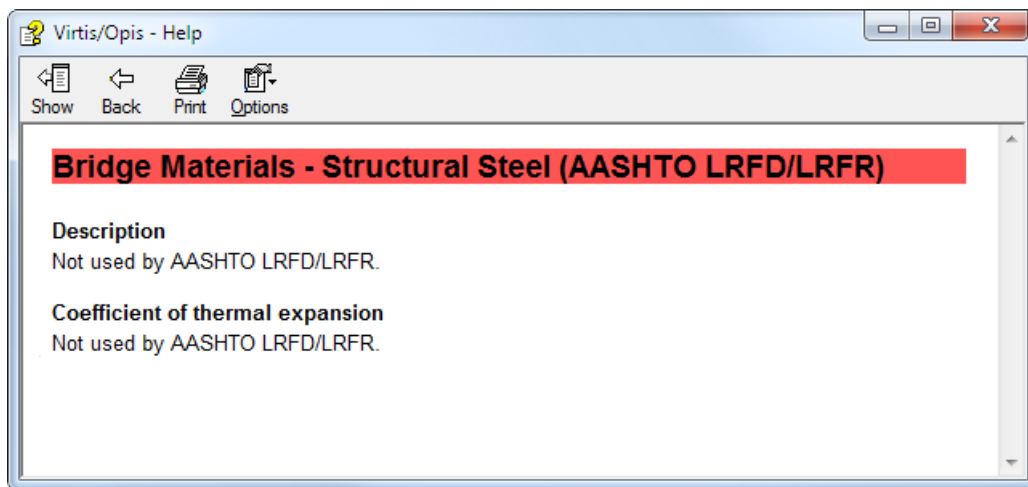
You can configure the system to display the engine related help for the analysis engine in which you are interested as shown below.



The BrR/BrD help topic for the Bridge Structural Steel Material is shown below.



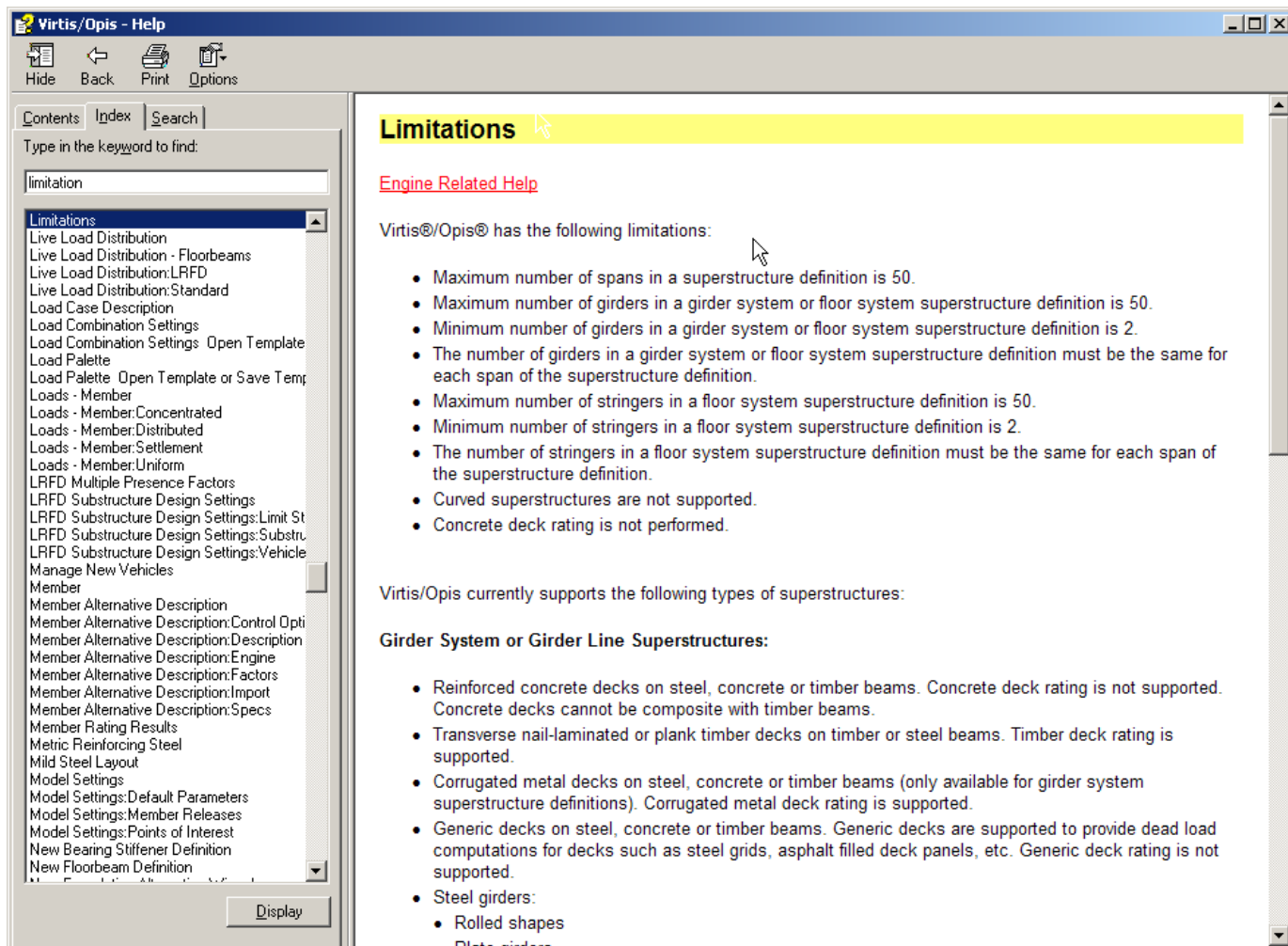
Selecting the Engine Related Help link opens the following window:



Limitations Help Topic

One help topic that merits special attention is the “Limitations” help topic. This topic should be reviewed by users to determine if BrR/BrD supports the type of bridge that they wish to enter. An “Engine Related Help” link is also available to describe any limitations the analysis engine may have.

A portion of the BrR/BrD “Limitations” help topic is shown below.



Training Aids

The BrR/BrD Technical Support website contains example problems that can be used as self-study guides for new users.

The BrR/BrD Technical Support website address is <http://aashto.engrprograms.com/virtis>. A registration form to register for this site is included with the CD for BrR/BrD. You should fill out this form and return it as instructed so you can access this website.

The “Tutorials” section of this website contains approximately 35 example problems for various activities such as entering different bridge and girder types, importing/exporting, rating, etc.