

# AASHTOWare Bridge 7.5 Installer Deep Dive

Jonathan Zdobinski  
[jonathan@promiles.com](mailto:jonathan@promiles.com)

Tony Baker  
[abaker@promiles.com](mailto:abaker@promiles.com)

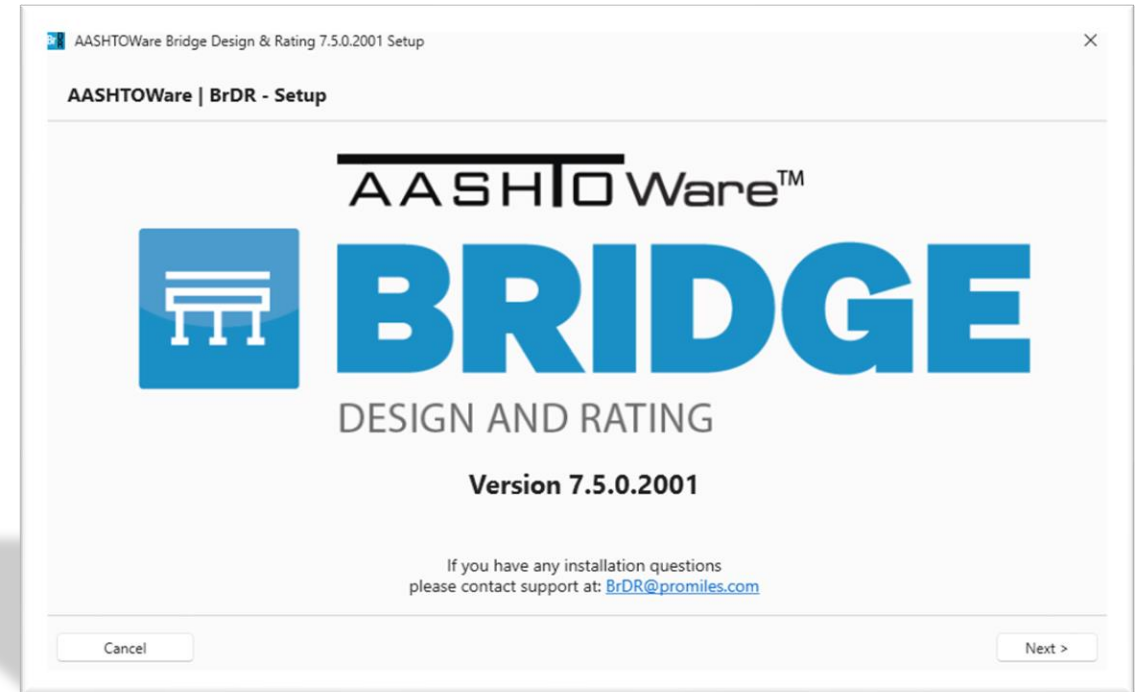


AASHTOWare RADBUG  
August 8, 2023

# Introduction - 7.5 Installer Deep Dive

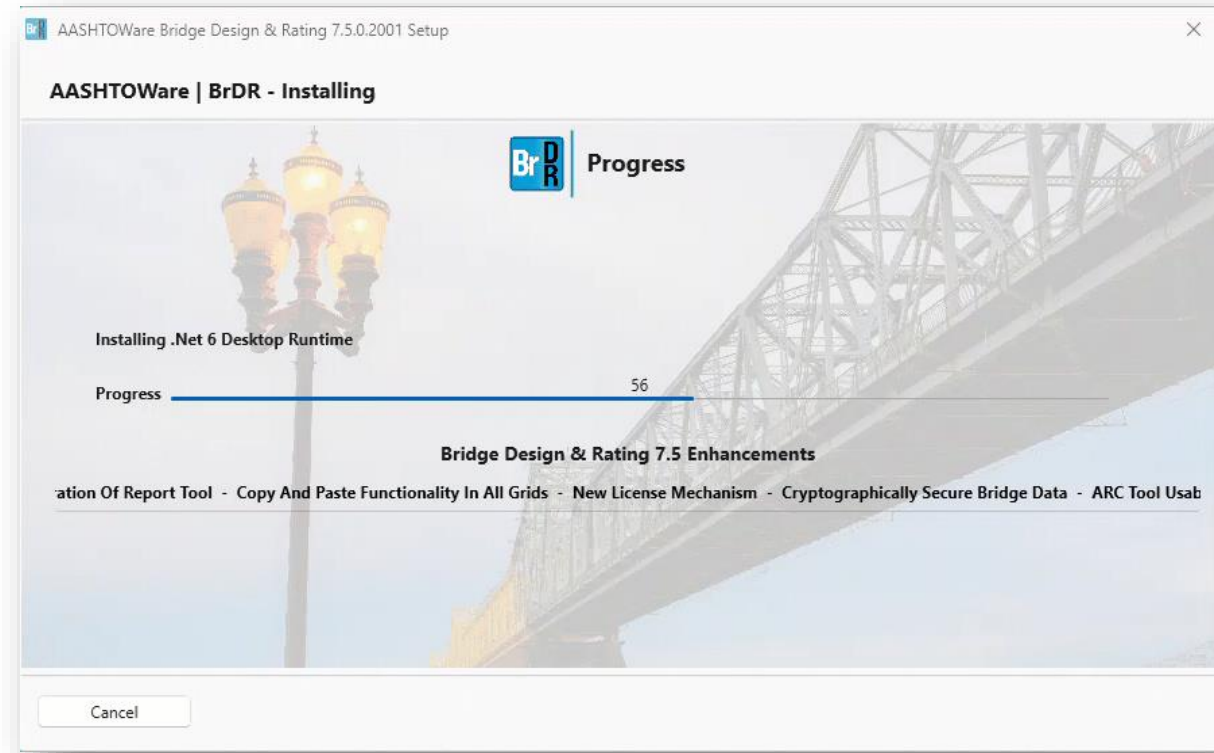
---

- Overview of New Installer
- User Interface
- Custom Installer Features
- Installation Workflow
- Benefits and Advantages



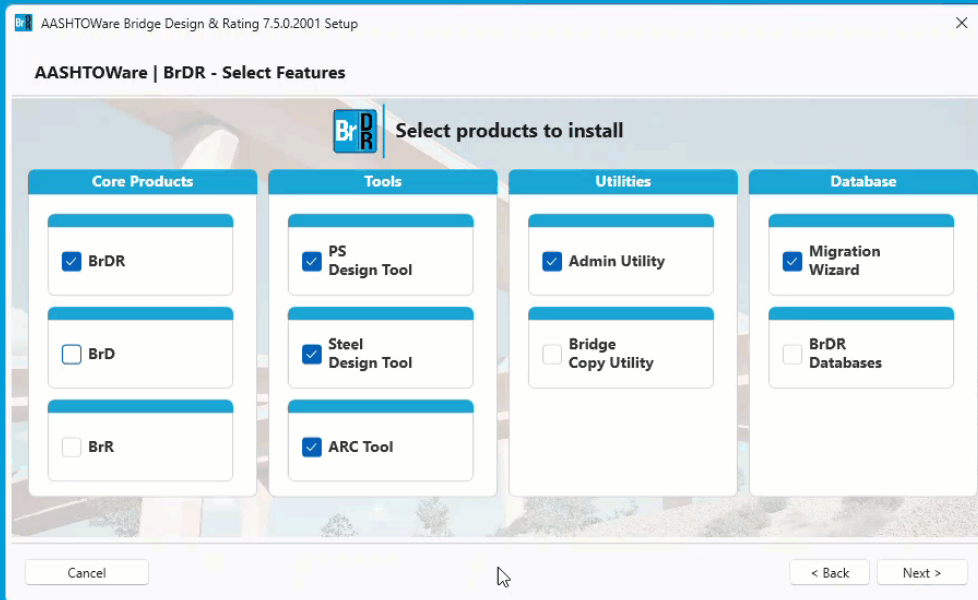
# Overview of New Installer

- Concise workflow in a single window
- Driven fully by WPF User Interface
- Using latest installer technology from WiX
- Unified user interface between BrDR and installer
- New logging and error handling



# User Interface in an Installer

- WPF - Windows Presentation Foundation
- Already used for all front end BrDR applications
- Benefits from all previous BrDR customizations
- Modern and efficient transitions and animations



# Custom Installer Features

---

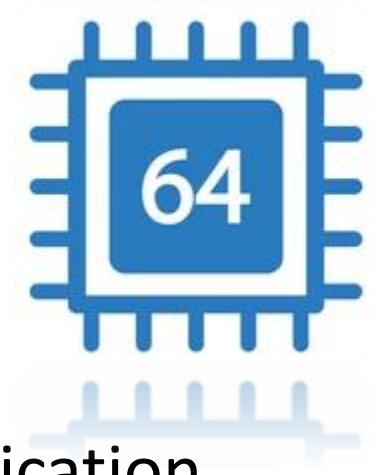
- WiX 4.0 Custom Bootstrapper enhancements
- Highly modular design for future installation needs
- Reworked database installation workflow and handling
- New Modify and Repair functionality



# Custom Installer Features

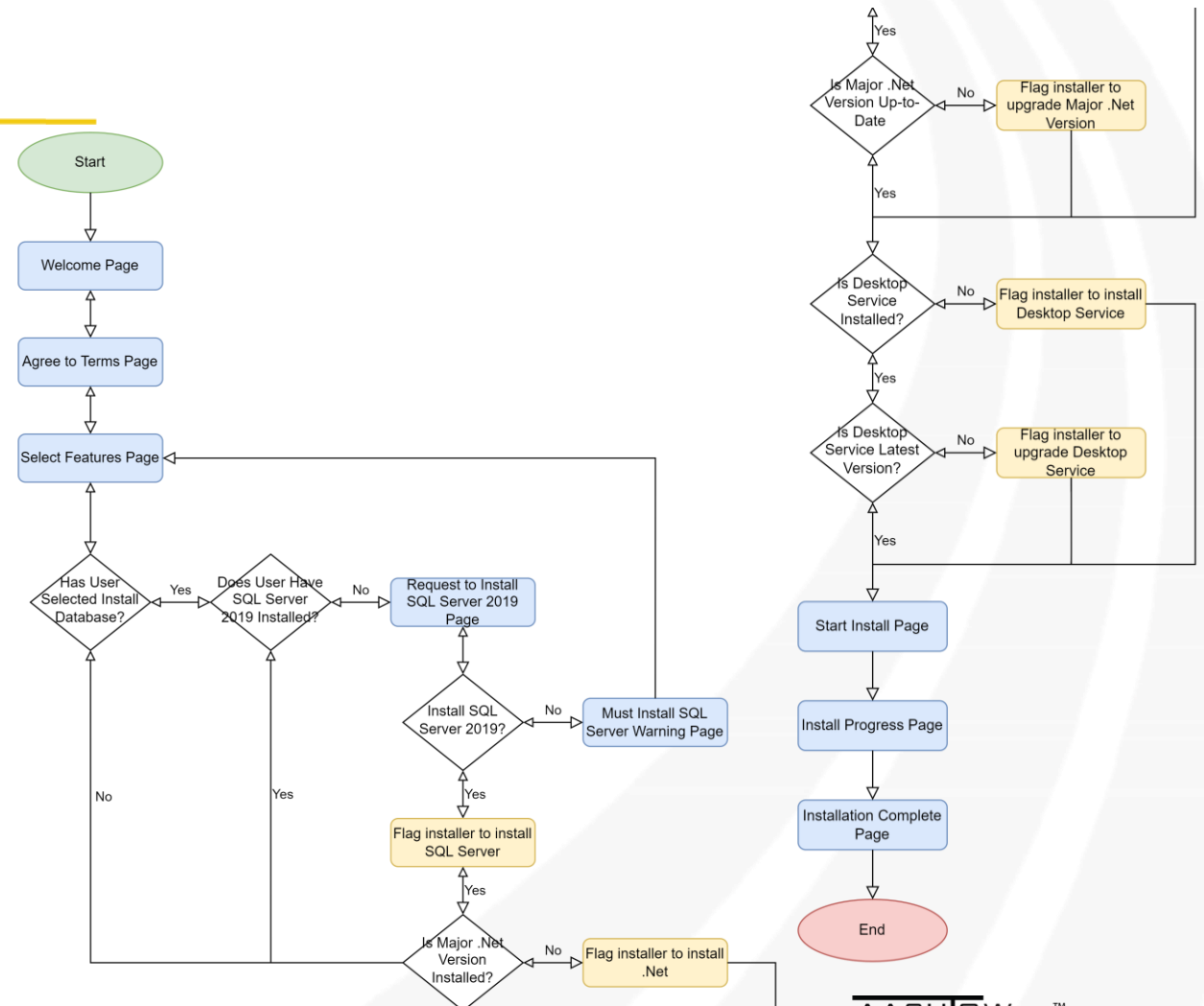
---

- Silent passive actions straight from the exe
- Movement to x64 bit architecture for the bootstrapper application
- New upgrade and patch functionality



# Installation Workflow

- Single Modular Design
- Focused on Pain Points of Previous Installation
- A new beginning for the installation process



# Benefits and Advantages

---



Upgrade capabilities



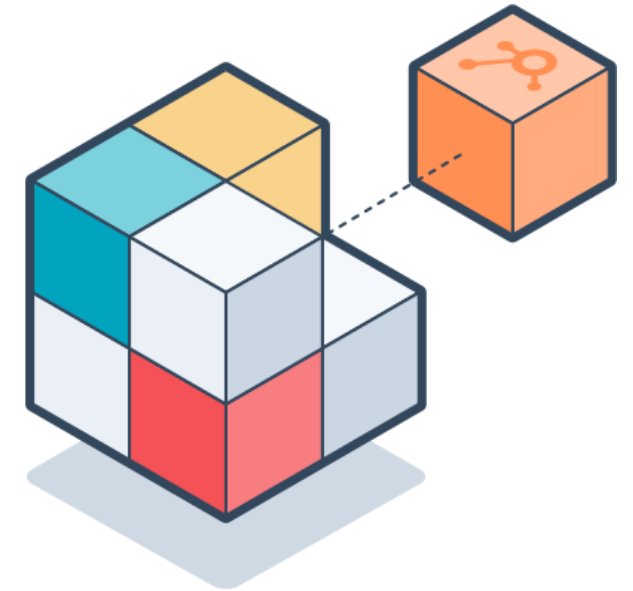
User experience



Modular Design



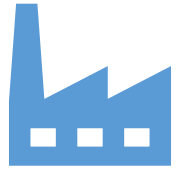
Logging and Error handling



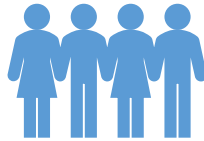


# Benefits and Advantages

---



Capitalize on  
WPF



WiX and  
Opensource  
community



Apple, IBM,  
Twitter, and  
thousands of  
others

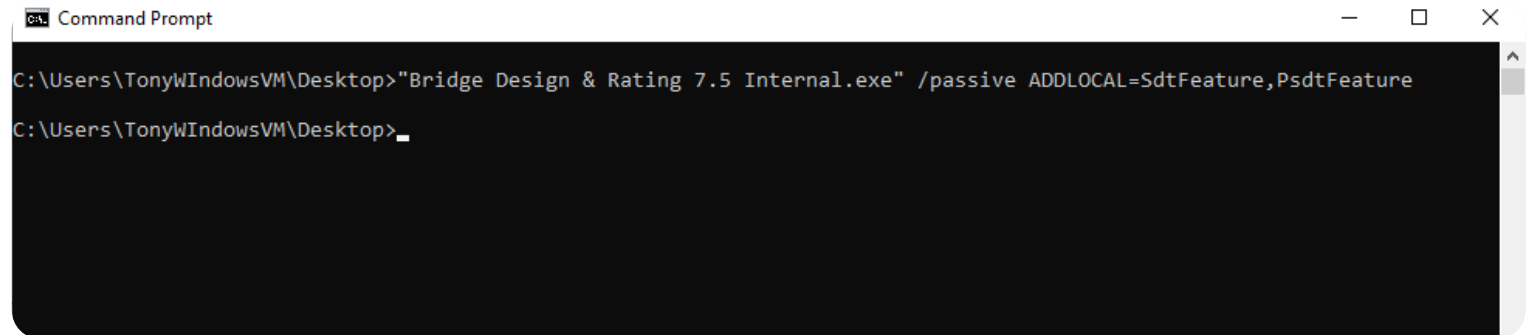


Modify  
functionality

# Silent Installation Capabilities

---

- Full support of silent and passive installation straight from exe
- MSI without prerequisites still available
- Logging capabilities during silent installation
- Inform your IT

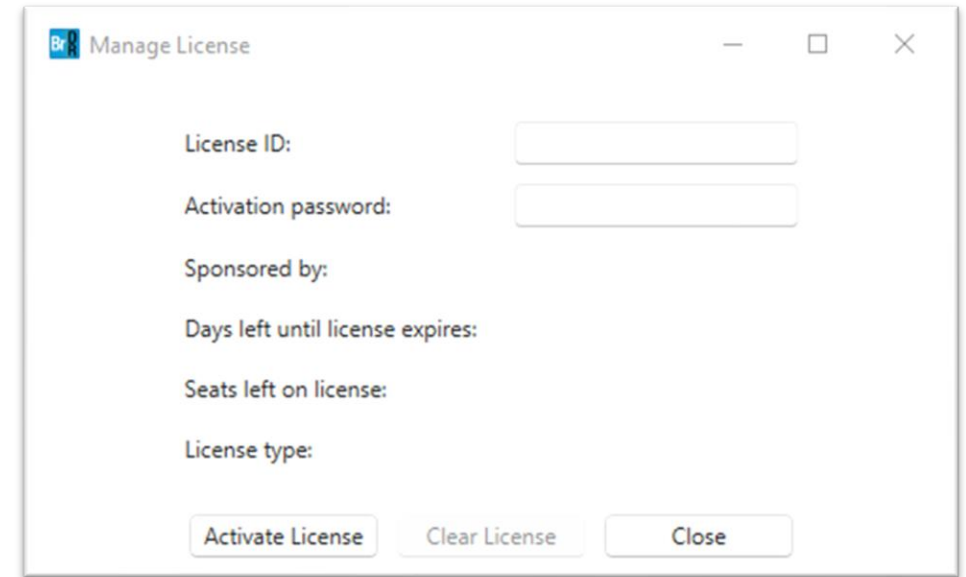


```
Command Prompt
C:\Users\TonyWIndowsVM\Desktop>"Bridge Design & Rating 7.5 Internal.exe" /passive ADDLOCAL=SdtFeature,PsdFeature
C:\Users\TonyWIndowsVM\Desktop>_
```

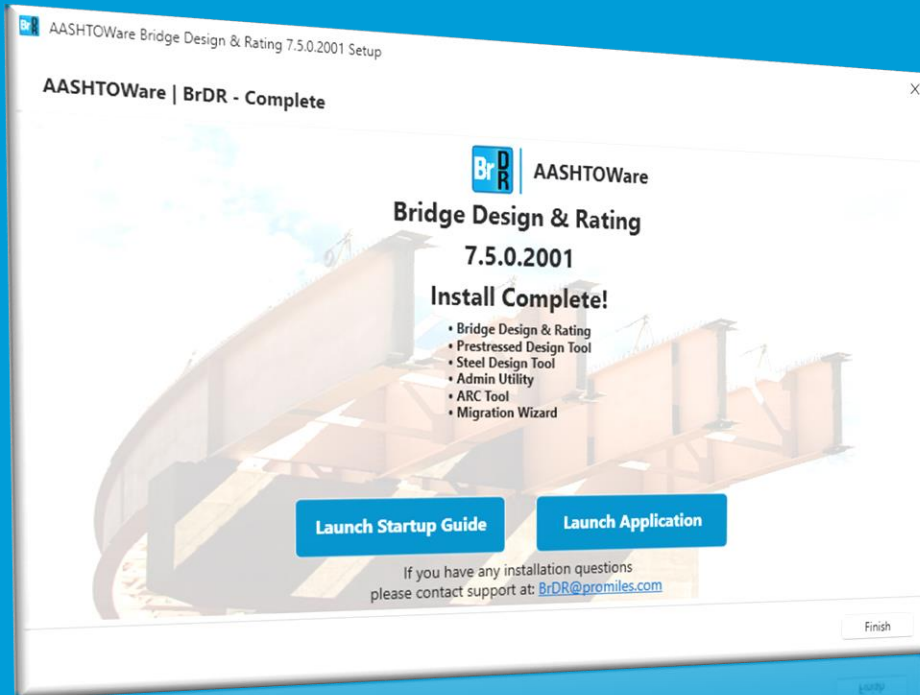
# Desktop Service

---

- Later presentation – 4 o'clock tomorrow
- Separate MSI for distributed installations
- Allows for singular installer for license types and product types



# Conclusion



- Foundation for future installation requirements
- UI/UX is always an important factor
- Most efficient and seamless way to quickly get users up and running
- The installer shapes users' perception; prioritize an exceptional experience

A blue-tinted photograph of a long bridge over a body of water. In the foreground, there are large, dark rocks. A person is visible in a kayak on the water. The sky is overcast with some clouds. The word "Questions?" is written in white, bold, sans-serif font in the center of the image.

**Questions?**

A blue-tinted photograph of a long bridge over a body of water. In the foreground, there is a rocky shoreline. A small boat is visible on the water in the middle ground. The sky is overcast with light clouds. The text "Thank you!" is overlaid in the center in a white, bold, sans-serif font.

**Thank you!**