

---

*AASHTOWare BrDR 7.5.0*

*Feature Tutorial*

*HLP1– Help Features*

# HLP1 - Help Features

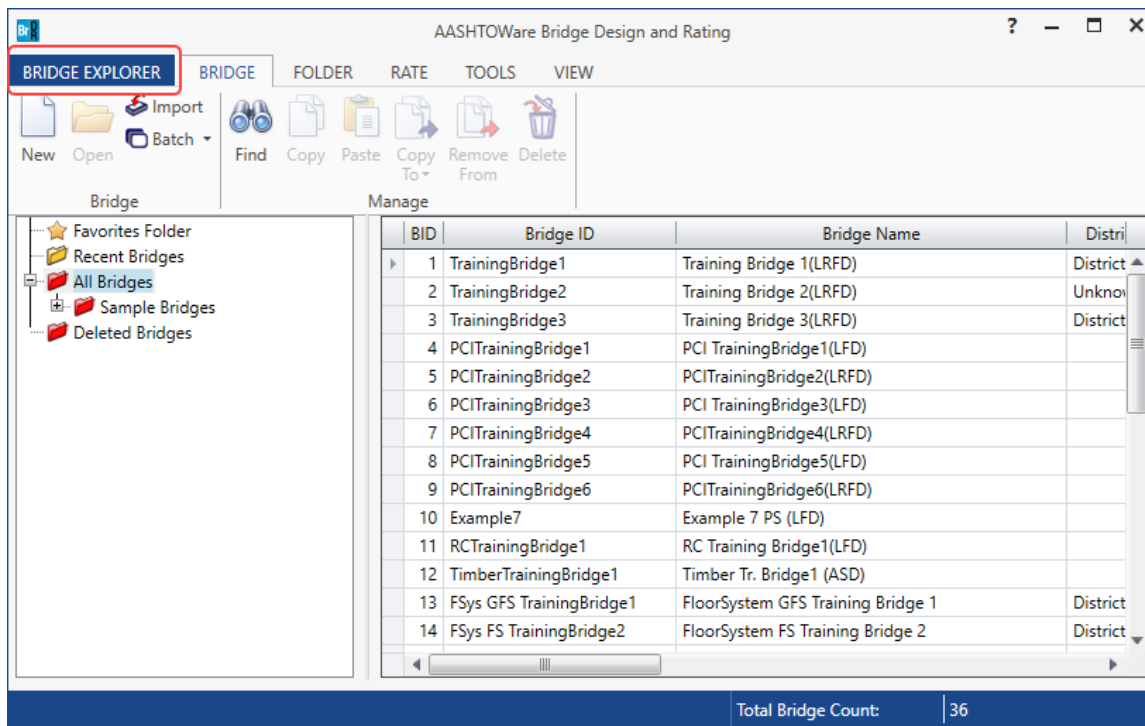
## Topics Covered

This topic describes the various help features and training available in BrDR.

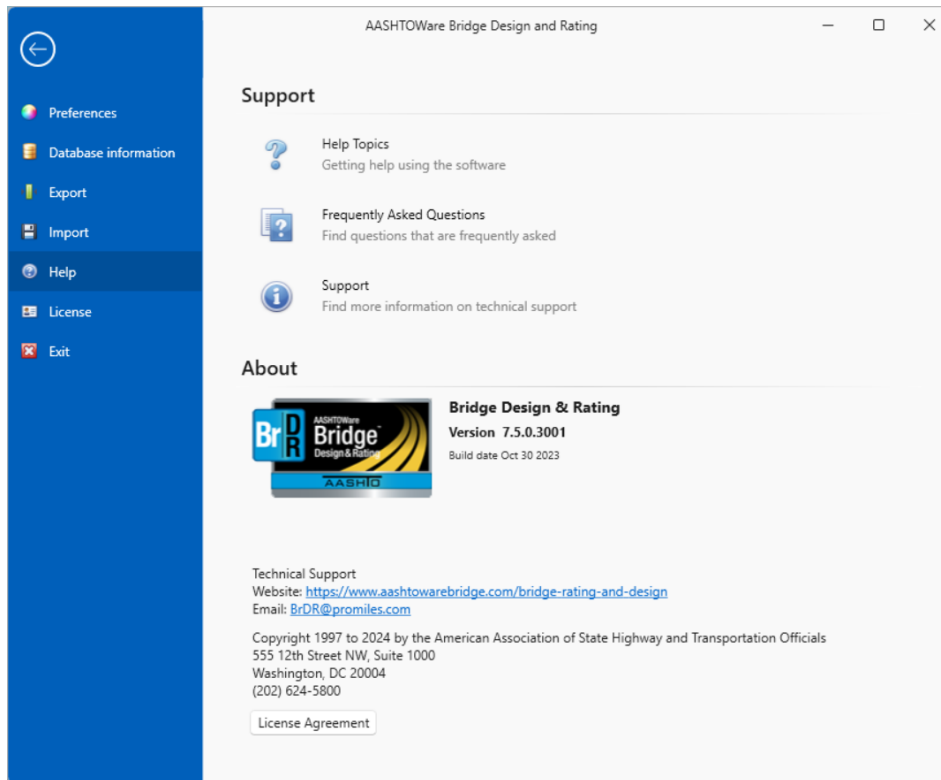
- Online Help
- Engine Related Help
- Limitations Help Topic
- Training Aids

## Online Help (BrDR 7.5.0)

There are many different online help files available in BrDR. To access BrDR help, open BrDR, click on **Bridge Explorer** and select **Help** from the left ribbon to open the following Help options.



## HLP1 - Help Features



- Selecting **Help Topics** from the menu opens the BrDR help file where you can view the **Contents**, the **Index** and **Search** for specific words.
- Selecting **Frequently Ask Questions** from the menu opens a BrDR help file containing Basic, Technical and Non-Technical frequently asked questions about BrDR.
- Selecting **Support** from the menu opens the Support page of BrDR help with technical support information and license support options.

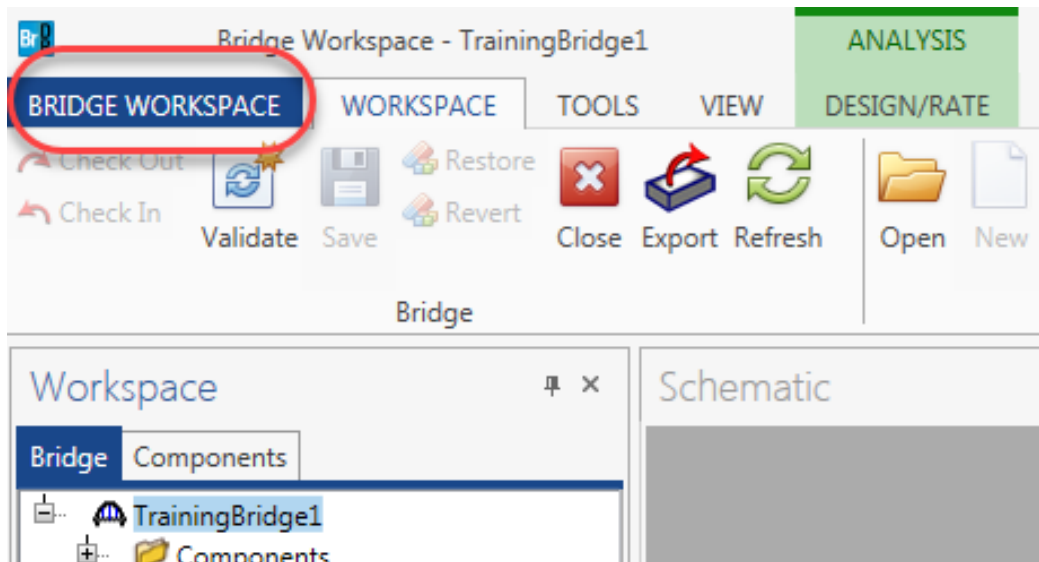
Online, context-sensitive help is available in each window of BrDR by clicking the F1 button while a window is open. This will open the BrDR help topic for that window.

## Engine-Related Help

BrDR has been designed to enter data describing the physical characteristics of a bridge irrespective of the analysis engine that will be used to analyze the bridge. Therefore, there may be some data in BrDR that may not be used by a particular analysis engine. Each BrDR help topic contains a link to **Engine Related Help** that helps determine which data is not used by the configured engine.

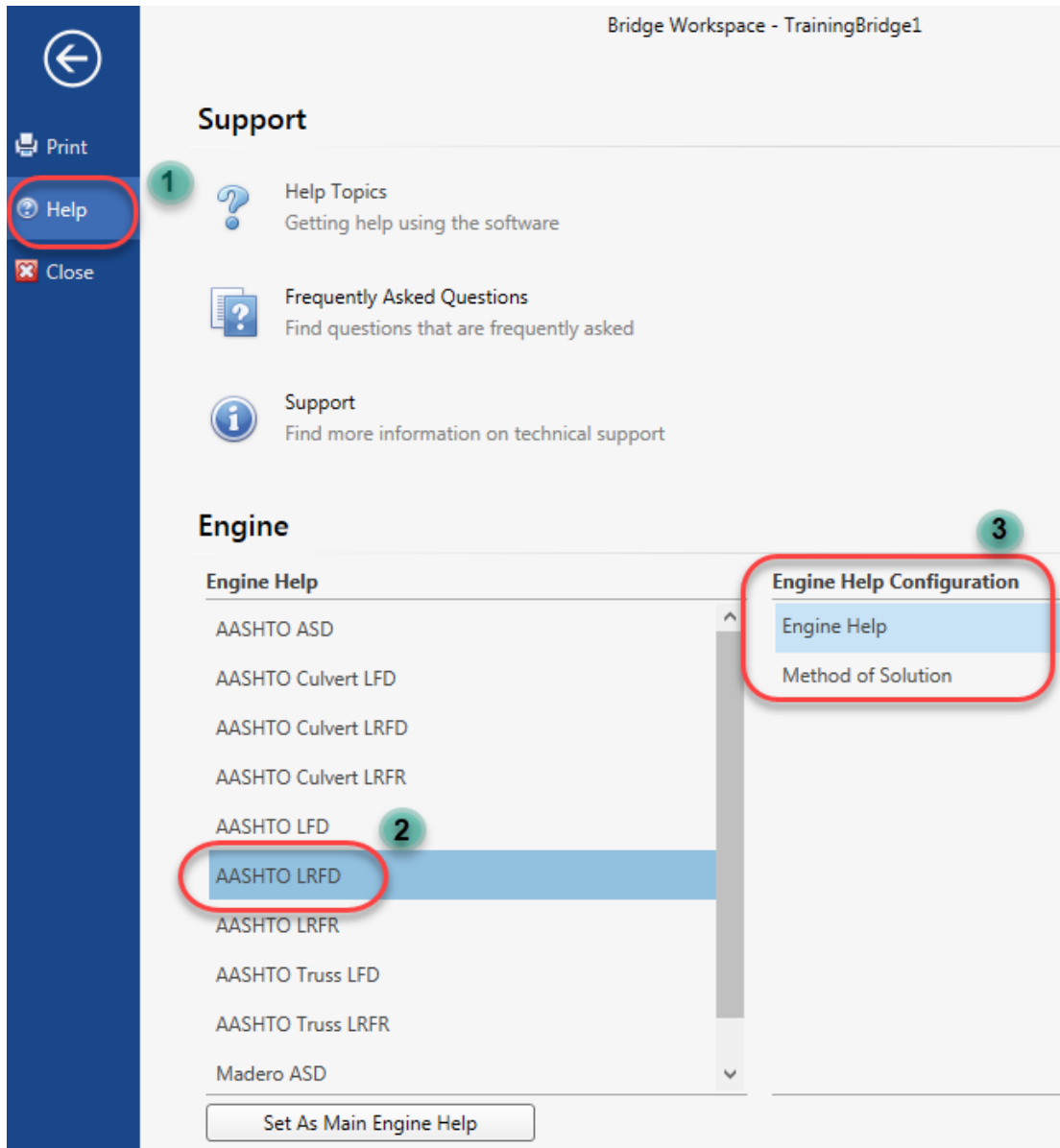
Engine Related help can be configured from the **Bridge Workspace** for a selected bridge. The steps to configure Engine related help are as follows:

1. Open the **Bridge Workspace** for the bridge you wish to access/set up **Engine related help**.

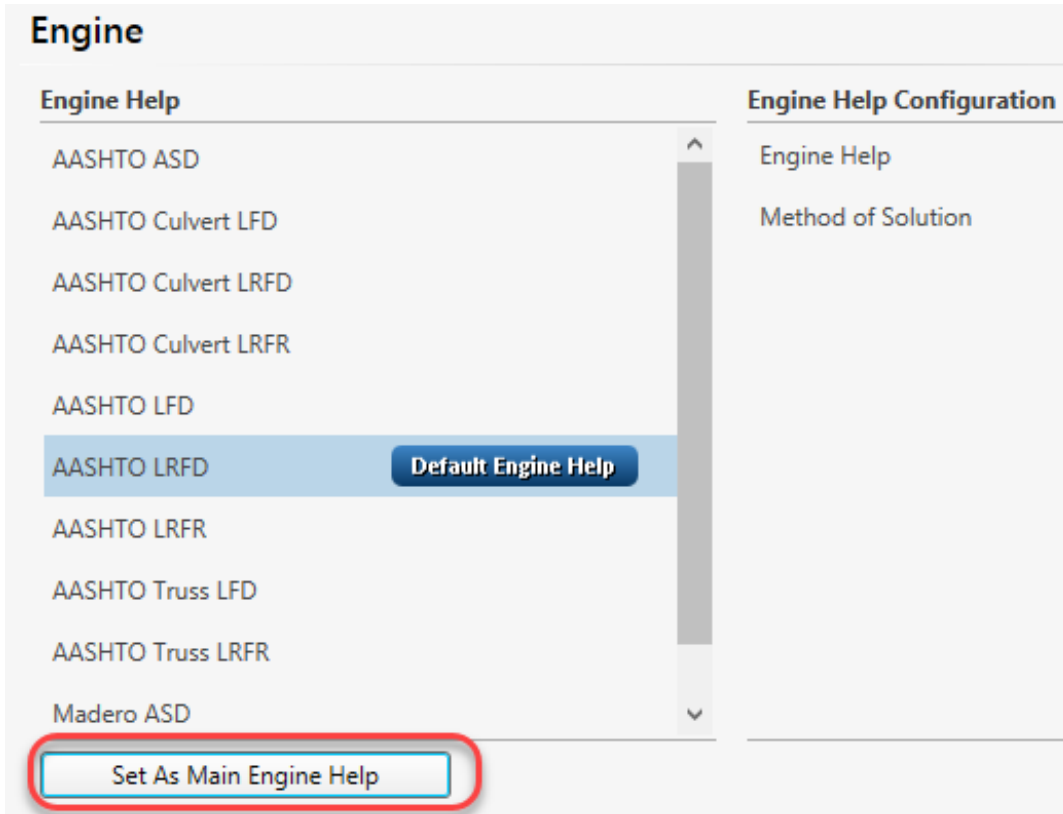


## HLP1 - Help Features

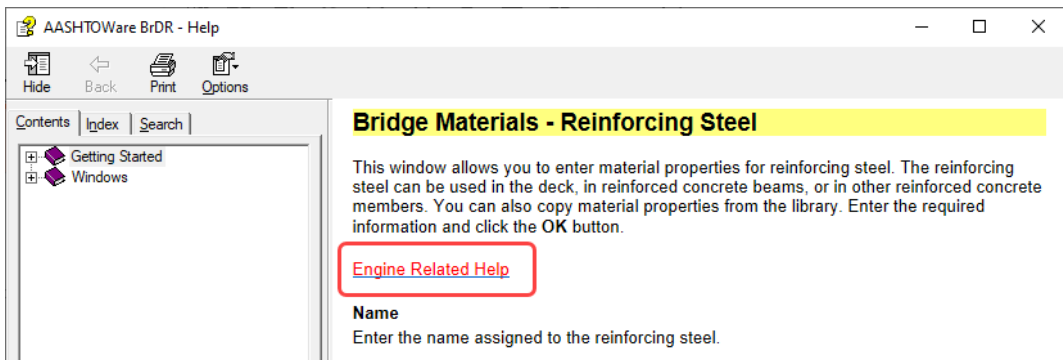
2. Click on the **Help** button (1) on the leftmost column. Select the relevant **Engine Help** (2) you wish to access for this bridge during this session from the **Engine Help** menu. The selected Engine Help and its Method of Solution gets populated on the **Engine Help Configuration** (3) menu on the right side, as shown below:



3. Click on the **Set As Main Engine Help** button to set the above selected engine help as the **Default Engine Help** as shown below:

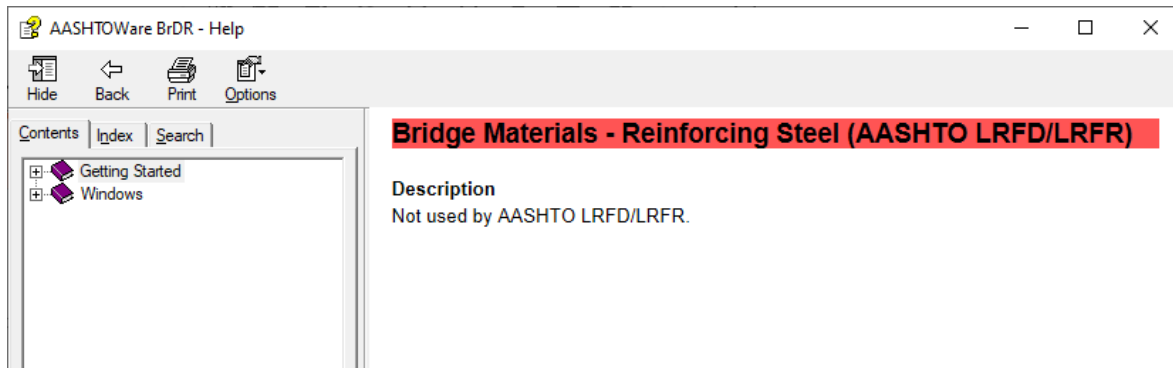


4. The engine help has been configured and can be accessed from any help topic that contains an **Engine Related Help** link. For example, the BrDR help for Bridge Materials – Reinforcing Steel contains a link to its respective Engine Related Help as shown below:



## HLP1 - Help Features

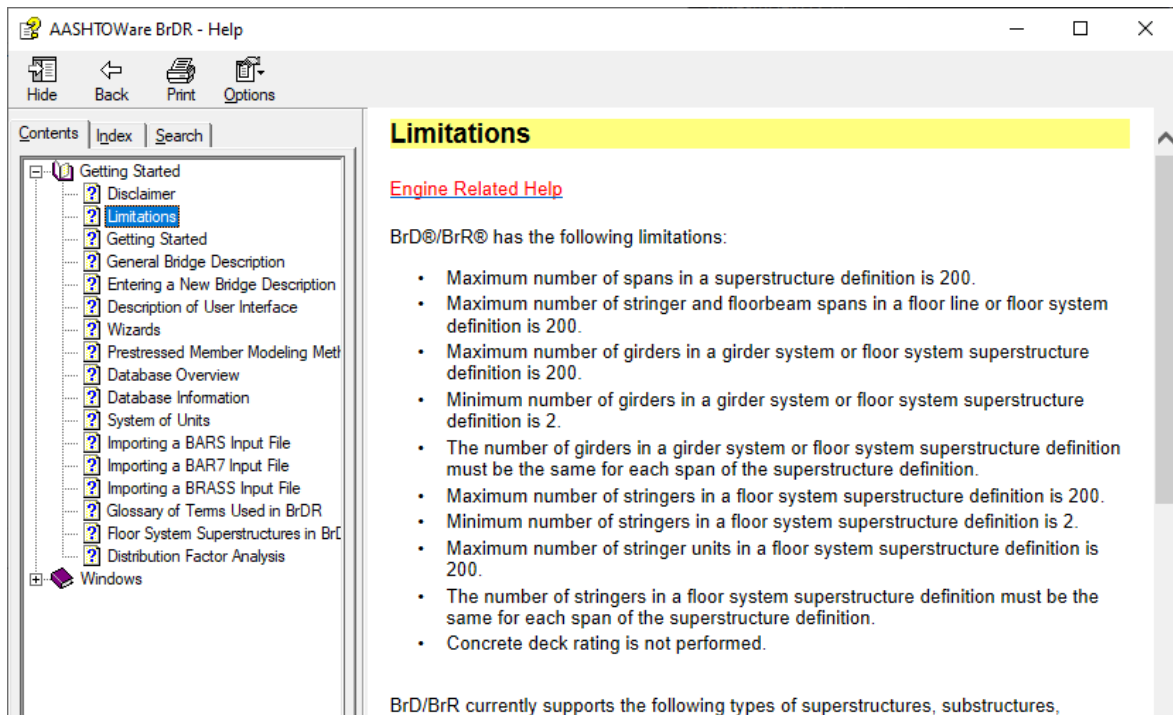
5. Clicking on the **Engine Related Help** link redirects to the **AASHTO LRFD Engine help** for Bridge Materials – Reinforcing Steel as shown below:



## Limitations Help Topic

The **Limitations** help topic, available in **BrDR Help**, merits special attention. This topic should be reviewed to determine if BrDR supports a particular type of bridge. An **Engine Related Help** link is also available to describe any analysis engine limitations.

A portion of the BrDR **Limitations** help topic is shown below:



## Training Aids

The BrDR Technical Support website contains example problems that can be used as self-study guides for new users. The BrDR Technical Support website address is

<https://www.aashtowarebridge.com>

The **Training** section of this website

<https://www.aashtowarebridge.com/bridge-rating-and-design/training>

contains approximately 150 example problems for various activities such as entering different bridge and girder types, importing/exporting, rating, etc.